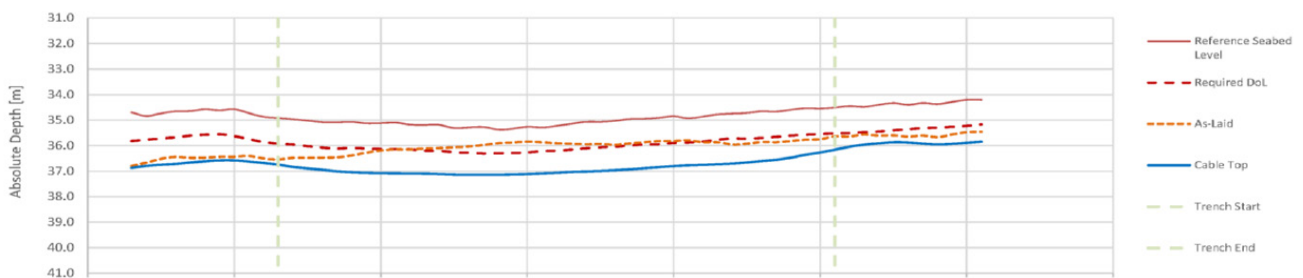
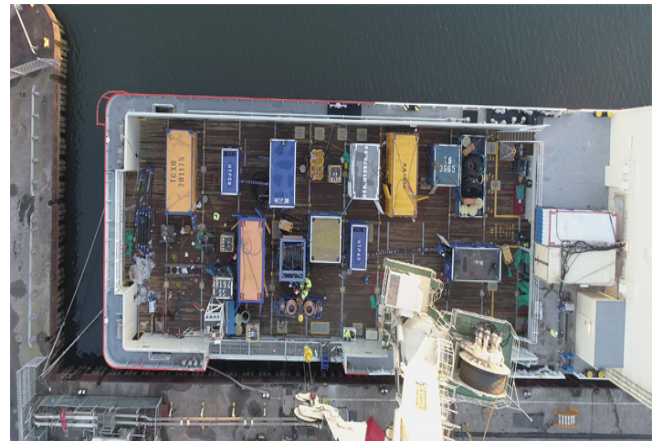




Export Cable Post Trenching
Rentel Offshore Windfarm
Q4 2017 / TRS1 CFE SPREAD



Rotech Subsea was contracted by **NKT HV Cables AB**. for the remedial Post Trenching works of the Rentel Offshore Windfarm Export Cable. The Rentel export cable with an approximate length of 41.5 km is laid from the Zeebrugge landfall towards the Rentel OSS.

Rotech Subsea Project Managed the full scope of work including Engineering of equipment, Seafastening to deck, Vessel Management and full ROV multibeam and positional Survey of the cable position before and after trenching operations.

14 Sections along the route were successfully lowered to ensure the Export Cable was within Client specification. Once again the TRS1 Trenching tool has performed as promised using a safe, non-contact method of post-trenching cables.

Reference

Mats Johnsson, Project Installation Manager, NKT HV Cables AB