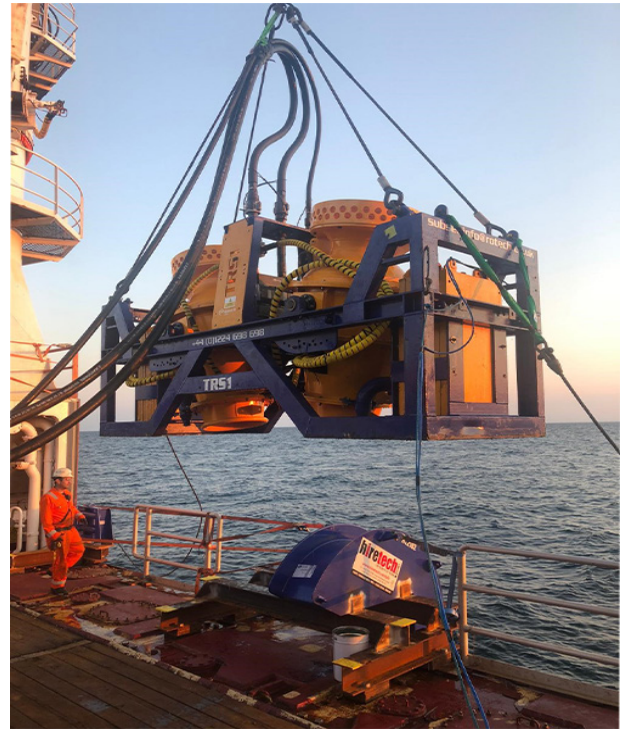
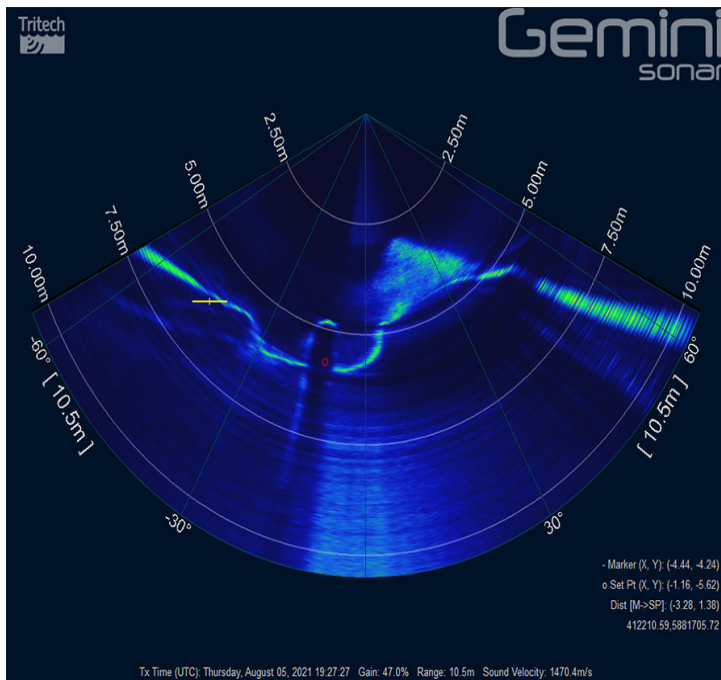


DEEPOCEAN

TRS1 - 24" Gas Pipeline De-burial Works - Thames-Bacton Pipeline



Rotech Subsea were contracted by **Deepocean** to carry out pipeline de-burial works on the Thames-Bacton 24" gas pipeline. The scope of work consisted of de-burying approximately 80m of pipeline and to carry out 3 spot excavations at different locations to allow access for cutting. The pipeline was buried **0.7m TOP** from the mean seabed level.

The subsea spread of equipment was mobilised on the Dina Star in July 2021 and was operated in **water depths** between **20m - 37m LAT**. **Soil conditions** were found to be **soft sand** with the presence of **soft clay** in some sections.

The project was a **success**. The TRS1 de-buried the pipeline to client specification in **2 Passes** at a progress rate of approximately **3m/min**. Due to soft soil conditions, rapid backfill occurred so 2 Passes were required to expose the pipeline and keep the trench open for sufficient time to allow access for the cuts to be made.

Another successful project for **Rotech Subsea**, with **Deepocean** delighted with the TRS1 performance capabilities. **Rotech Subsea** look forward to future collaborations with Deepocean.

Reference:

Allan Strachan, Project Manager, Deepocean