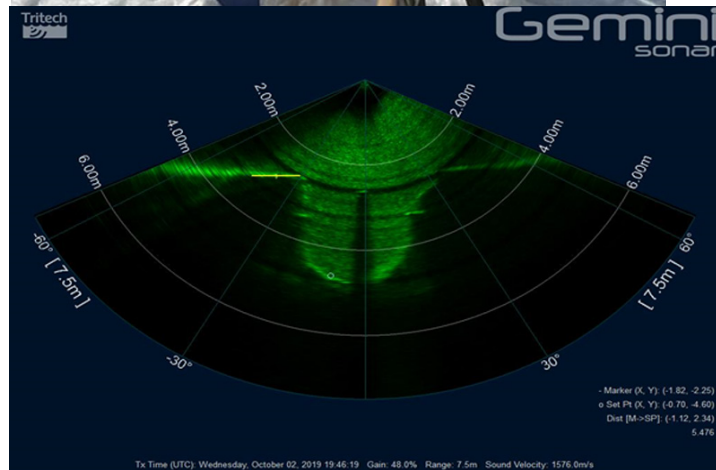




**TRS1LD & Jets - Cable Burial, Walney OWF**  
Q3 2019 - TRSL1D & JETS SPREAD ON OSV RELUME



**Rotech Subsea** were contracted by **Orsted** to provide the TRS1LD Jet Trenching tool - equipped with HP jets - to carry out cable burial at Walney OWF. Rotech Subsea took control of all operations for this project from chartering the vessel to contracting all relevant parties required to carry out a successful excavation project. The TRS1LD was selected by Orsted due to its unparalleled technical and performance capabilities resulting in increased productivity and a reduction on the projects total costs.

The subsea spread of equipment was mobilised on the OSV Relume and deployed using the ships crane. Two separate cables (WOW03 & WOW04) - totalling approximately 3.5km in length - were to be trenched to Orsted specification of 2.0m TOC in the soft sand areas and to 1.0m TOC in the Stiff Clay areas. Water depth ranged from -2.0m to +14.0m LAT.

The project was a success, with the cables trenched to Orsted Specification at an average rate of 4m/min in the soft sand areas and 2m/min in the stiff clay.