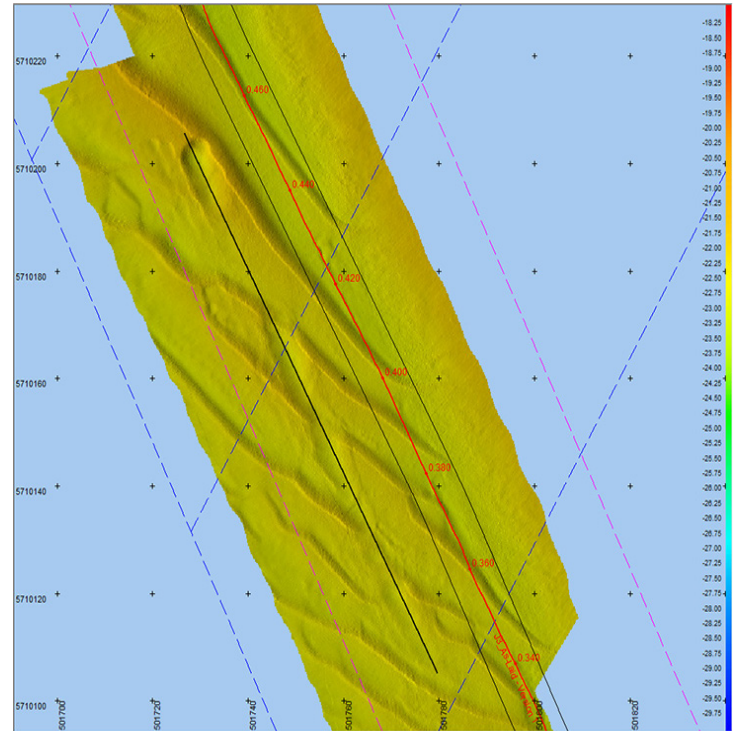
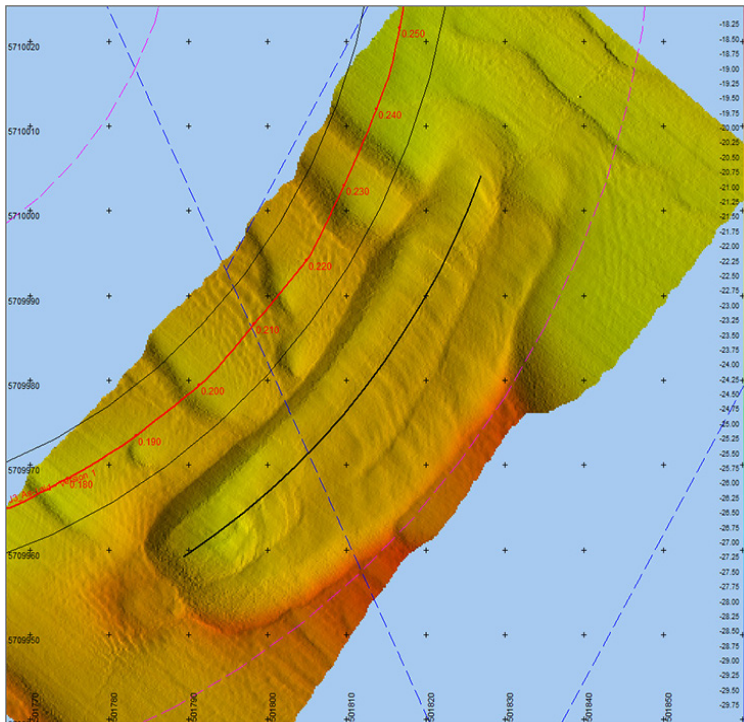




TRS2 - Sandwave Clearance, Norther OWF
Q3 2019 - Sandwave Clearance Survey



Rotech Subsea were contracted by **Van Oord** to provide the TRS2 Controlled Flow Excavation tool to carry out Sandwave Clearance in the Norther OWF. The TRS2 was selected by Van Oord due to its unparalleled technical and performance capabilities resulting in increased productivity and a reduction on the projects total costs.

The subsea spread of equipment was mobilised on the Topaz Tangaroa and deployed using the ships crane. Sandwaves up to 2.5m in height were excavated successfully in water depths up to 35m.

The project was a success, with the sandwaves cleared, allowing for the Norther IAC to be accessed for burial. With soil conditions being described as Very Dense Silty Sand to Clay, the TRS2 achieved an average excavation rate of 3m/min.