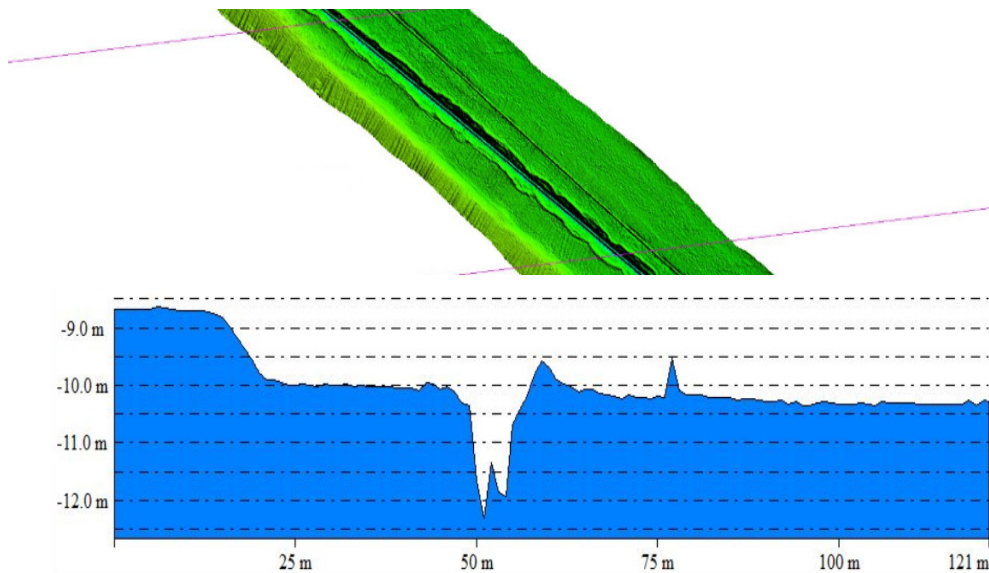
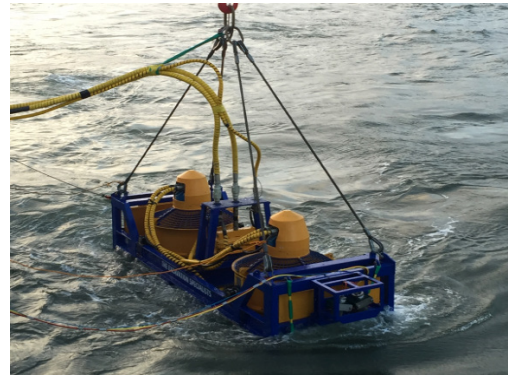




42" Pipeline Post Lay Trenching and Backfill Offshore KSA

Q3 2018 / TRS2 CFE SPREAD



Rotech Subsea were contracted by **SAIPEM** as part of a Pipeline Post Lay Trenching and Backfill Project. The Rotech Subsea **TRS2** tool was selected by Saipem for this workscope due to the unparalleled Technical and performance capabilities. These capabilities also increased productivity reducing total cost on the project. The spread of equipment was mobilised on a DP2 MultiPurpose Support Vessel to complete the post lay trenching and Backfill of 2 x 42" Pipelines in around **10m water depth**.

Each **Pipeline** had to be lowered to **1m Top of Pipe** below the adjacent seabed level. The post lay trenching and backfill operation was completed with ease, progressing at a rate averaging 3m/minute. Another project successfully completed with the TRS2 CFE tool.