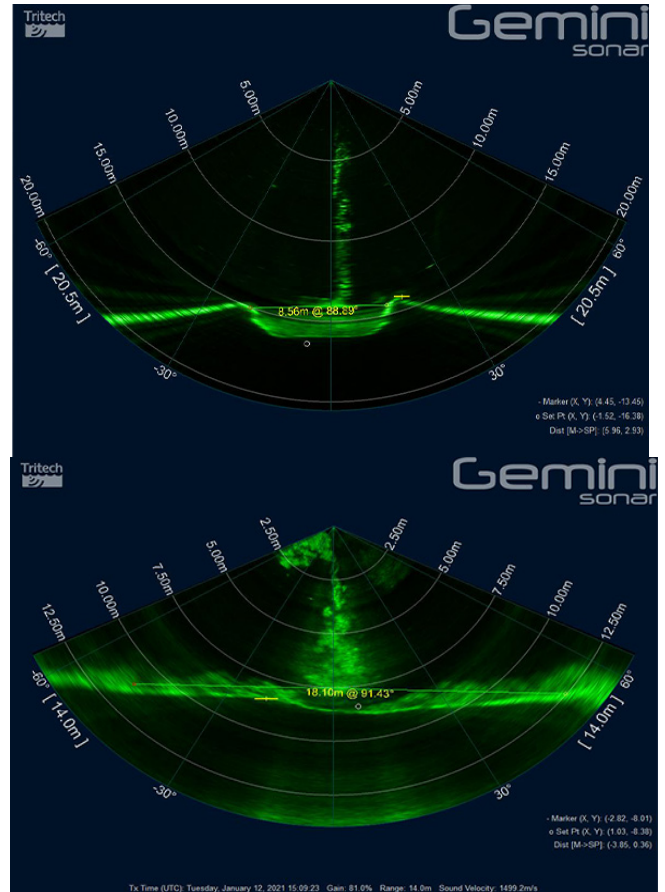
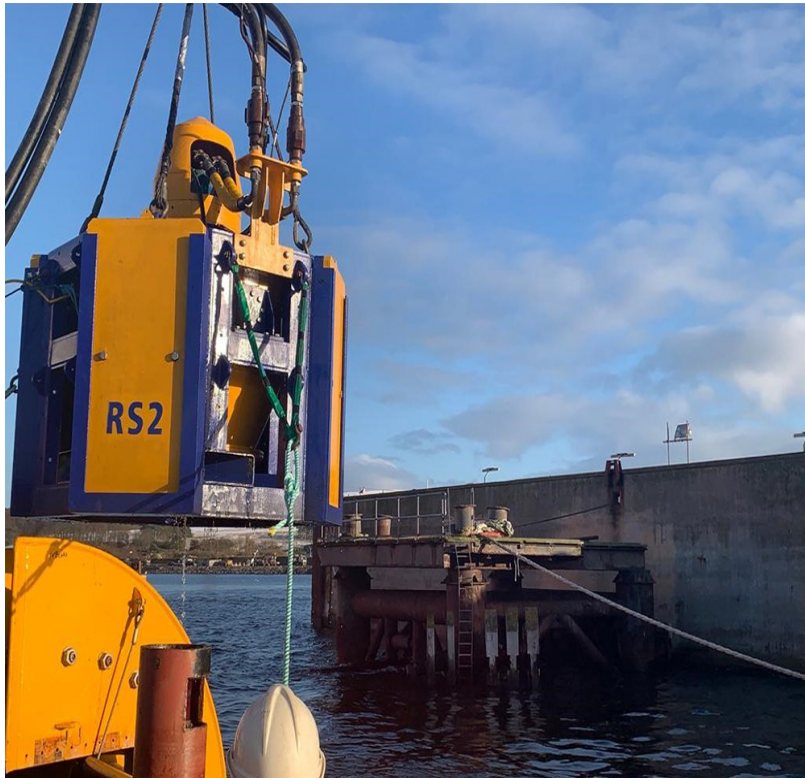




RS2 - Silt Dispersal & Pile De-burial - Nigg Energy Park

Q1, 2021 - RS2 Deployment & Sonar Grabs of Pile De-burial and Dock Entrance Silt Clearance



Rotech Subsea were contracted by Global Energy Group to provide the RS2 CFE tool for the dispersal of silt that had accumulated along the dock gate sill. The RS2 was also used for the de-burial of 4 piles to allow access for cutting operations. The project was located at Nigg Energy Park, Cromarty Firth.

The RS2 was selected by Global Energy Group due to its high volume output performance making it the ideal tool for silt dispersal operations due to its ability to displace large amounts of subsea material with ease. The Rotech equipment was mobilised on the old Cromarty Ferry and operated in **water depths** up to **15m**.

The project was another **success** using the RS2 CFE tool. Multiple passes were carried out, with the RS2 clearing 0.6m in depth of silt across the 120m dock entrance. The RS2 also cleared 5.5m of sand from a natural sandbank to the east of the gate entrance allowing for easier access for incoming vessels. The 4 piles were de-buried with ease. Each pile was de-buried to 3m in depth and 8m in width with an approximate excavation time of 3 minutes per pile.