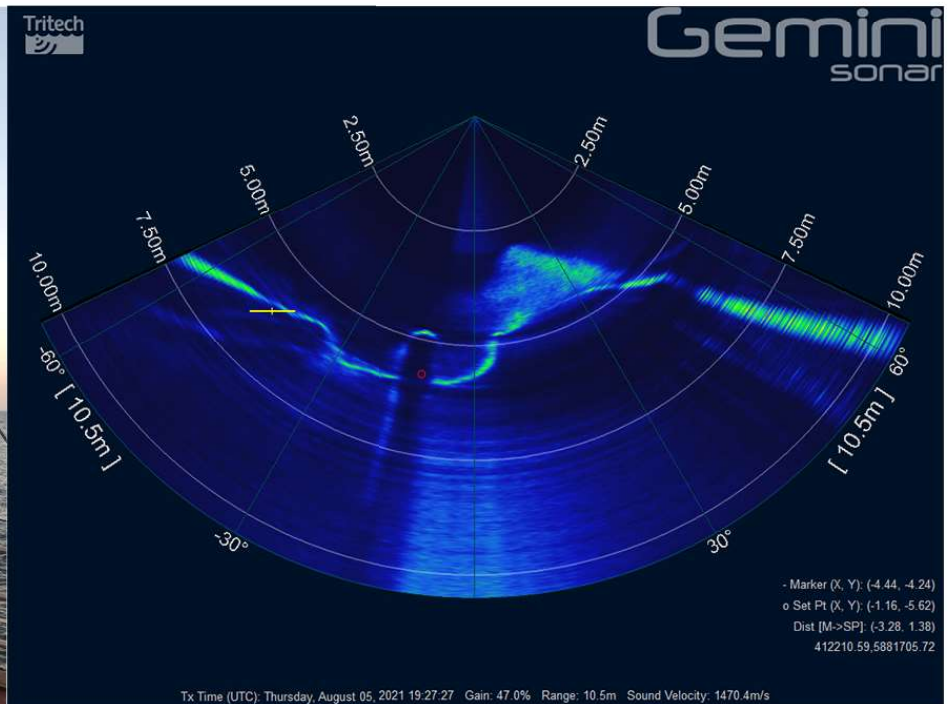


## DEEPOCEAN

### TRS1 - 24" Gas Pipeline De-burial Works - Thames-Bacton Pipeline



**Rotech Subsea** were contracted by **Deepocean** to carry out pipeline de-burial works on the Thames-Bacton 24" gas pipeline. The scope of work consisted of de-burying approximately 80m of pipeline and to carry out 3 spot excavations at different locations to allow access for cutting. The pipeline was buried **0.7m TOP** from the mean seabed level.

The subsea spread of equipment was mobilised on the **Dina Star** in July 2021 and was operated in **water depths** between **20m - 37m LAT**. **Soil conditions** were found to be soft **sand** with the presence of soft **clay** in some sections.

The project was a **success**. The TRS1 de-buried the pipeline to client specification in **2 Passes** at a progress rate of approximately **3m/min**. Due to soft soil conditions, rapid backfill occurred so 2 passes were required to expose the pipeline and keep the trench open for sufficient time to allow access for the cuts to be made.

Another successful project for Rotech Subsea, with Deepocean delighted with the TRS1 performance capabilities. **Rotech Subsea** look forward to future collaborations with **Deepocean**.

#### Reference:

Allan Strachan, Project Manager, Deepocean