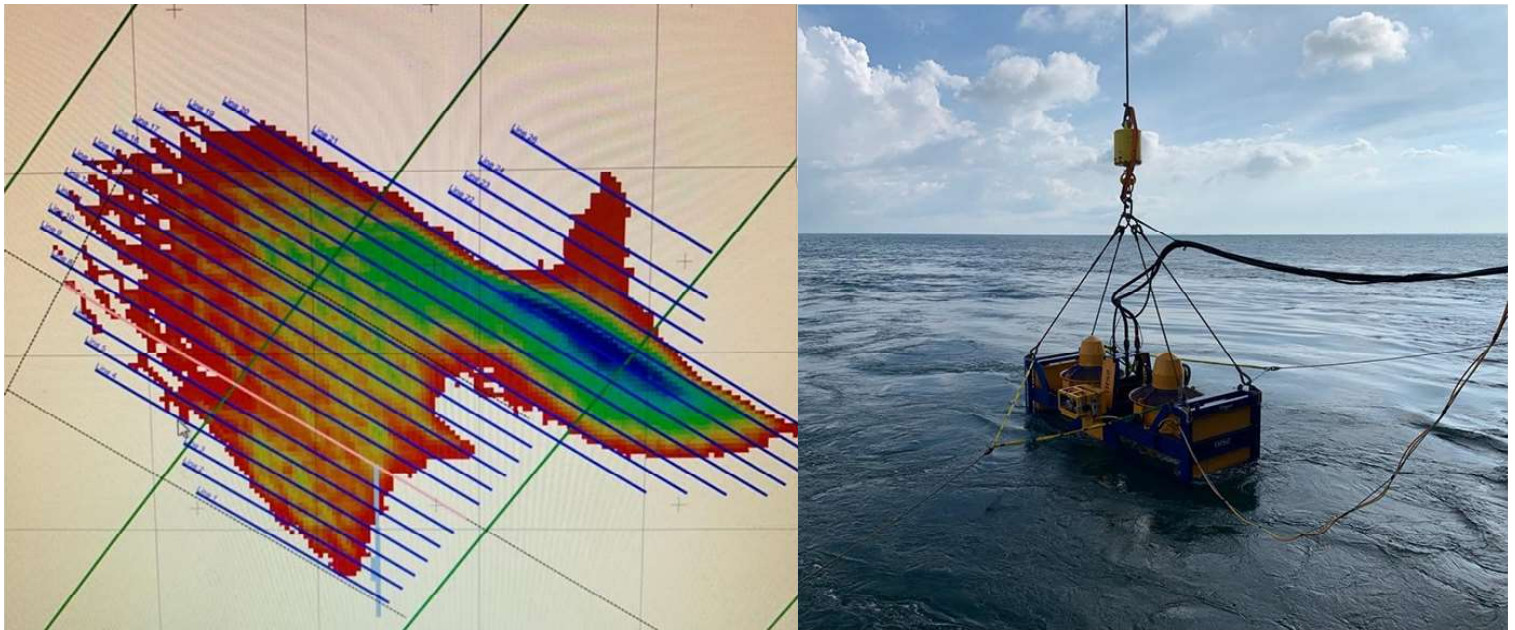


TRS2 - Sandwave Clearance - Yunlin Offshore Windfarm

seaway⁷

Q3 2020 - EXCAVATION LINES CARRIED OUT BY TRS2 & TRS2 DEPLOYMENT



Rotech Subsea are contracted by **Seaway 7** to provide the TRS2 CFE tool for Sandwave Clearance operations at Yunlin Offshore Windfarm. The scope of work is to be completed in 2 phases with phase 1 having been completed in the third quarter of 2020. Phase 2 is to commence in the early stages of 2021.

The TRS2 was selected by **Seaway 7** due to its high volume output performance making it the ideal tool for sandwave clearance due to its ability to displace large amounts of subsea material. The Rotech Equipment was mobilised on the Topaz Installer and operated in **water depths** of between **5m-10m**.

Phase 1 of the project was a **success**. The TRS2 was utilised for seabed lowering excavations. The TRS2 tool was used to carry out 25 grid Line excavations, lowering the seabed to allow vessel access to the worksite during spring tides. The sections to be levelled varied in height ranging between 0.4m - 1.8m. Rotech carried out excavations at **speeds** between **4m/min - 10m/min**. Rotech look forward to returning to Yunlin Offshore Wind Farm to complete Phase 2 of the project in 2021.