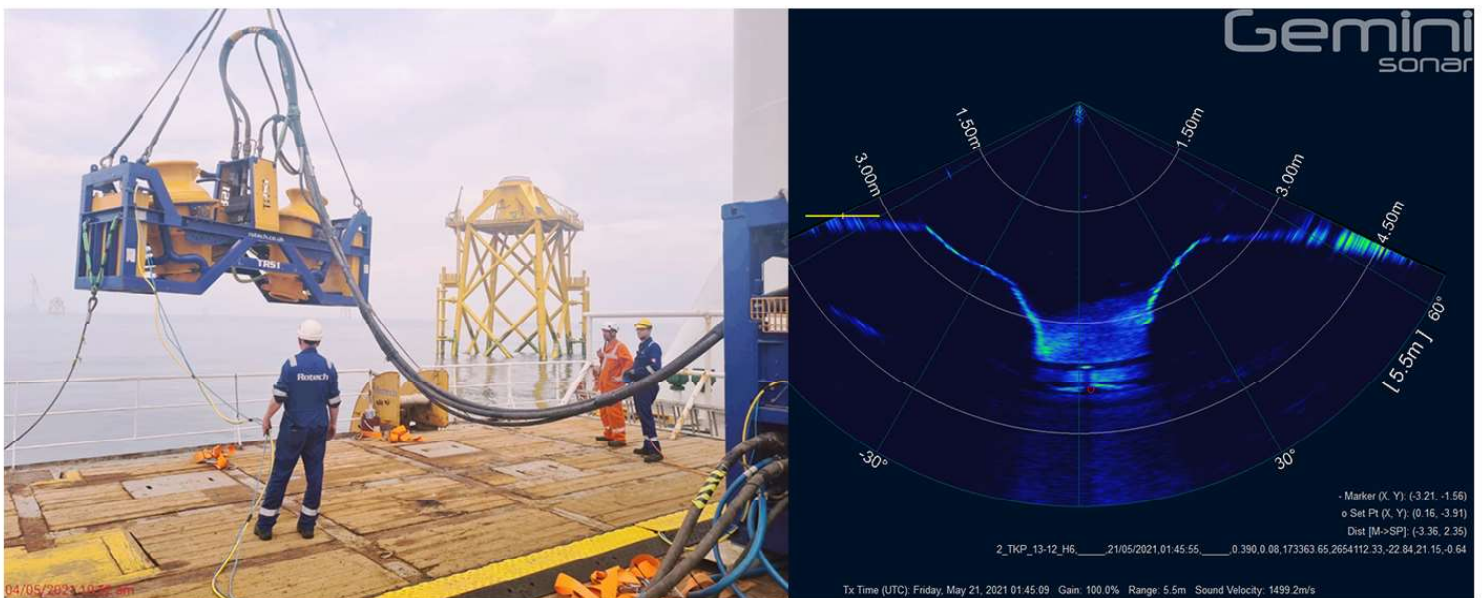




## TRS1 & TRS2 - Post-Lay Cable Trenching - Changhua OWF Phase 2

Q2,Q3 2021 - TRS1 Deployment from the Connector & burial Grab



**Rotech Subsea** - contracted by **Jan De Nul** - returned to Taiwan for Phase 2 of Post-Lay Trenching works on Changhua Offshore Windfarm. The scope of work consisted of burying the remaining 10 cables on site to **2.0m ToC**, meaning a total of 21 cables (4 Export, 17 Array) would have been buried to JDN specification. For this scope, Rotech's TRS1 & TRS2 were used to complete the works.

The CFE tools were mobilised this time on the Connector vessel and operated in **water depths** between **20m - 30m**. The **soil conditions** experienced ranged from **soft SAND** to slightly **stiff CLAY**. The equipment was deployed from the port side of the vessel using its 400t Crane.

Phase 2 of the project was a **success** with the 10 remaining Array Cables being buried to JDN specification with ease. TRS1 excelled and lowered to client specification in 1 Pass at 2m/min. A 2nd pass was carried out at 4m/min as requested by JDN to act as a flushing pass. The TRS2 lowered the cable with 3 passes at an average rate of 3m/min.

Rotech Subsea are delighted to have provided a successful project for JDN's first offshore wind project outside of Europe. Rotech Subsea look forward to future endeavours with JDN and further building on our strong working relationship.