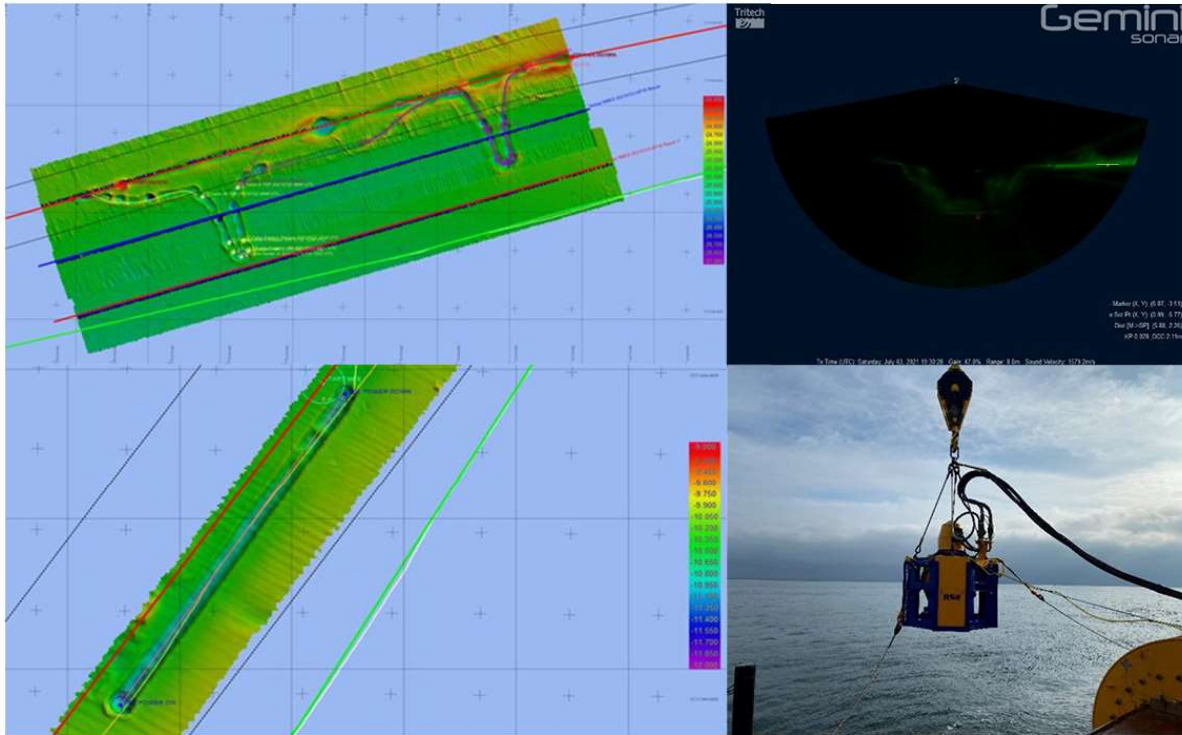


RS2 - Cable De-burial & Re-burial Works - Saint Nazaire Windfarm



Rotech Subsea were contracted by **Prysmian** to carry out cable de-burial and re-burial works of 2 export cables on the Saint Nazaire Offshore Windfarm. The scope of work consisted of de-burying cables C1 & C2 which were **2m** below MSBL and to re-bury the cables to the same depth after jointing operations had been carried out. The **RS2** was selected to carry out the scope of work due to its high flow capabilities resulting in excellent de-burial performances. The ability to change to smaller nozzle sizes on the tool also allows for very efficient burial operations whilst maintaining a narrow trench.

The subsea spread of equipment was mobilised on the **Swerver 1** in Q2 2021, and operated in **water depths** between 8m - 30 LAT. **Soil conditions** experienced were dense **sands** with the presence of a hard layer at 2m depth.

The project was a **success** with **Prysmian** delighted in **Rotech Subsea's RS2** technical capabilities. The RS2 de-buried the cable to client specification with **1 Pass** at progress rates between **2-3m/min**. Burial depth of the cable was also achieved in **1 Pass** at a rate of approximately **1-2m/min**. Prysmian requested a second flushing pass as contingency. The performance capabilities of the RS2 allow for the most efficient operations and thus save on project total costs.

Another impressive performance from the RS2 Controlled Flow Excavator has resulted in yet another successful project for all parties, and **Rotech Subsea** look forward to future collaborations with **Prysmian**.

Reference:

Peter Watson, Installation Manager, Prysmian