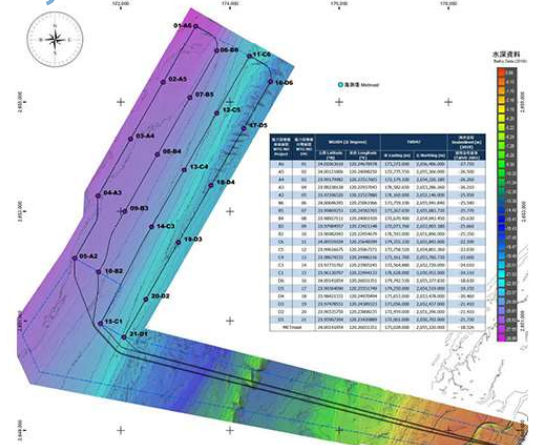
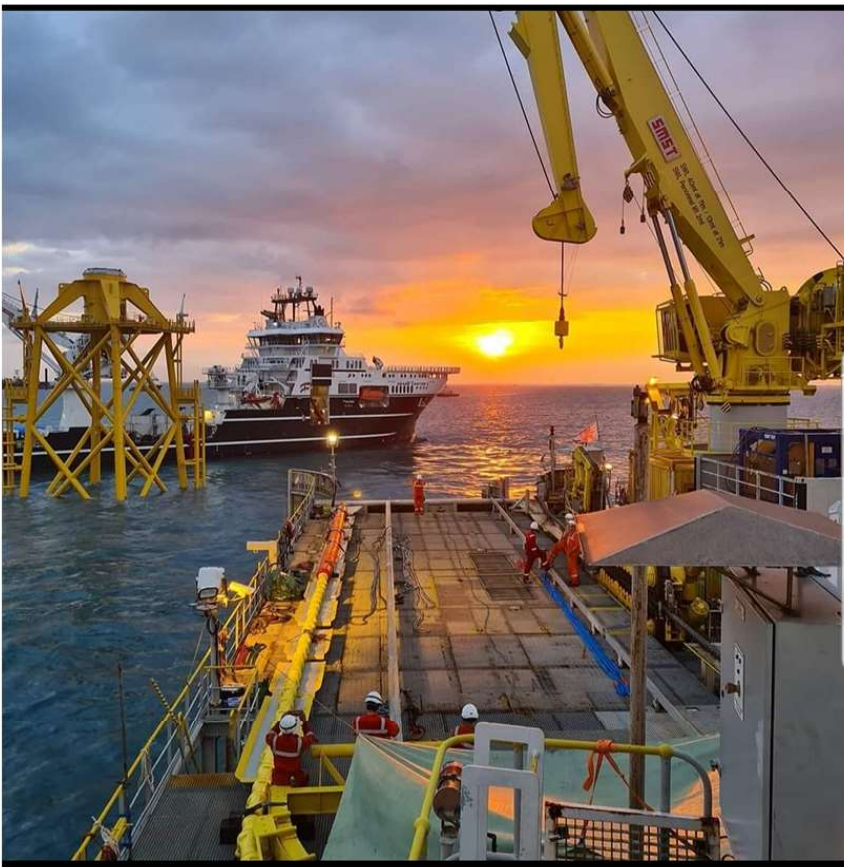


## TRS1LD - Post-Lay Cable Trenching - Changhua OWF



Jan De Nul  
GROUP

Q2,Q3 2020 - Willem De Vlamingh & Grand Canyon II and Cable Routes



Rotech Subsea were contracted by Jan De Nul to provide the TRS1LD Jet Trenching tool to carry out Post-Lay Trenching works on Changhua Offshore Windfarm, Taiwan. The scope of work consisted of burying a total of 21 cables (4 Export, 17 Array) to client specification of **2.0m DoL**. The project will be completed in 2 phases.

The TRS1LD was selected by Jan De Nul due to its unparalleled technical and performance capabilities resulting in increased productivity and a reduction on the projects total costs. The subsea spread of equipment was mobilised on the Willem De Vlamingh as well as being mobilised on the Grand Canyon II and deployed using the ships crane. Water Depths ranged from 8.0m - 29.0m LAT.

Phase 1 of the project was a **success** with 4 Export Cables and 7 Array cables being buried to client specification with ease. Soil conditions were described as soft sands however, we experienced large sections of stiff clay with shear strengths up to 80kPa. Despite this, the TRS1LD excelled and still achieved Jan De Nuls burial specifications. The TRS1LD lowered the cable with 2 passes at an average rate of 4m/min and reaching speeds of up to 10m/min in some sections.