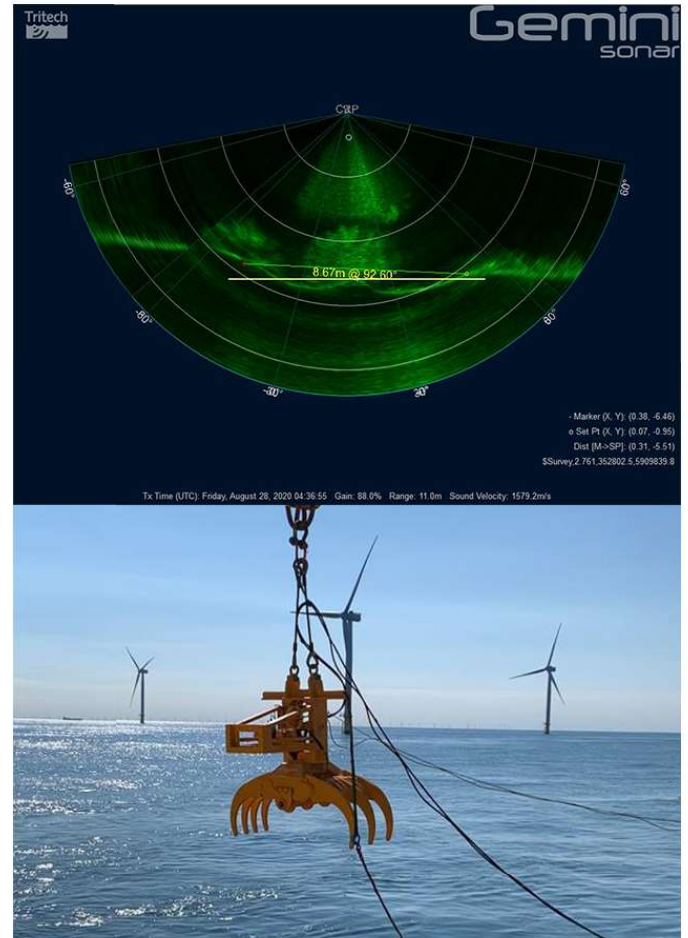
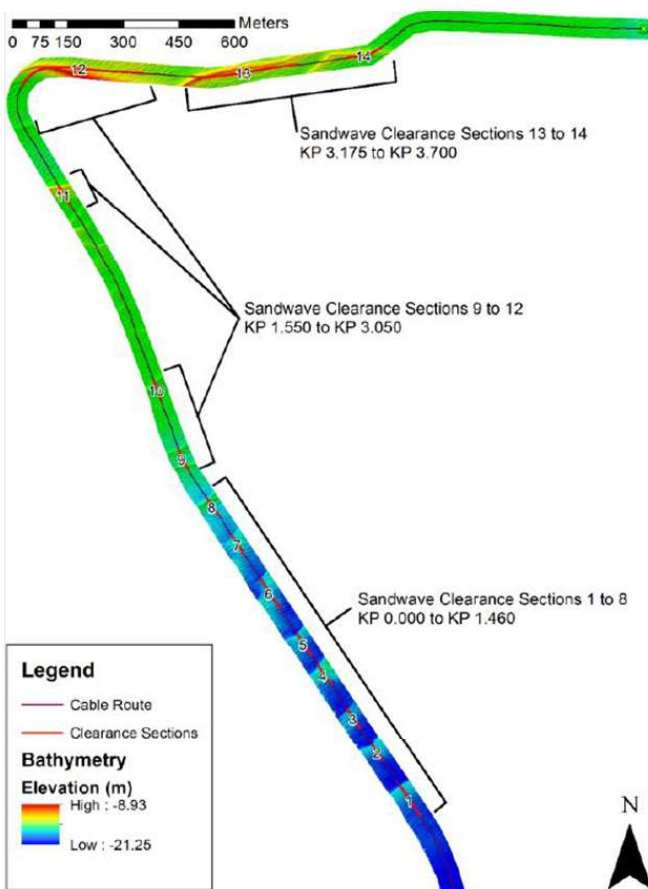


TRS2 & RSG - Sandwave Clearance & Cable Recovery Race Bank Offshore Wind Farm



Q3, 2020 - Sandwave Clearance Route, Sonar Grab & RSG in Action



Rotech Subsea were contracted by Global Marine to provide the TRS2 CFE tool to carry out Sandwave Clearance and the Rotech RSG grab system to assist in cable remedial works at Orsted's Race Bank Windfarm. The scope of work consisted of clearing a suitable corridor to Mean Sea Bed Level to allow Global to utilise their Q1400 Track trencher.

The TRS2 was selected by Global Marine due to its high volume output performance making it the perfect tool to fluidise and displace large amounts of sediment. The subsea spreads of equipment were mobilised on the Global Symphony and operated in water depths between 9.0m - 18.0m.

The project was a success. Sandwaves were cleared with ease leaving a corridor between 8.0m - 10m wide for the Global Track trencher to enter. This was achieved in 2 passes at a vessel speed of 4m/min in Dense Sand soils. The TRS2 was also used in simops to debury approximately 3km of cable as Global Marine were recovering the cable. The RSG grab operations were also a success. The Grab pulled the cable free from the sea bed allowing Global Marine to cut the cable for recovery.