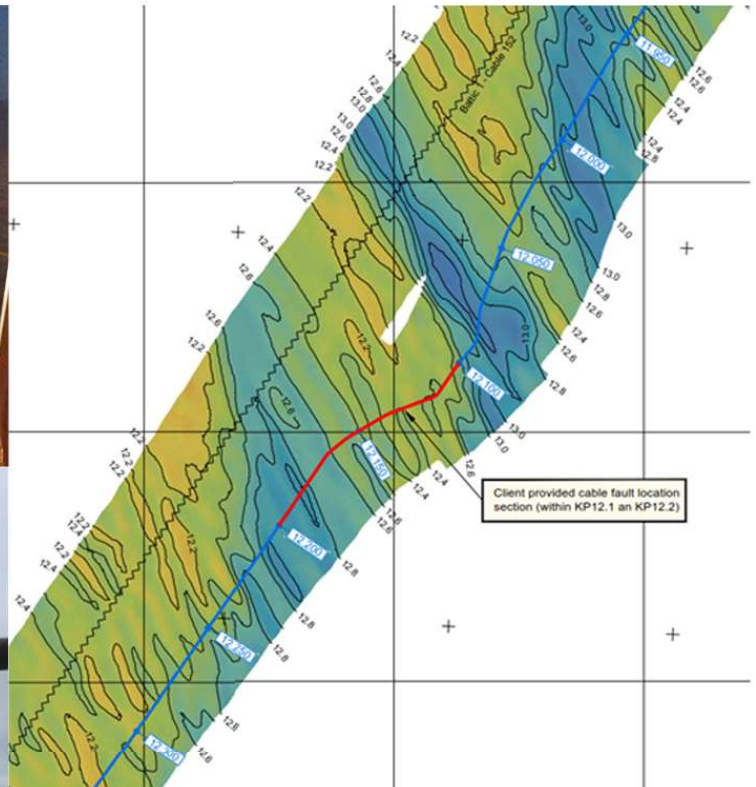


# RS2 & RSG - Cable De-Burial, Recovery & Post Lay Trenching - 50 Hertz

Q2 2019 - RS2, RSG & Cable Route

**NKT**



**Rotech Subsea** were contracted by **NKT** to provide the RS2 CFE tool for the de-burial of a subsea cable. Rotech proceeded to recover the subsea cable using the Rotech Subsea Grab (RSG) allowing NKT to carry out cable repairs. The RS2 was then utilised for the post lay trenching of the repaired cable. Operations were carried out at 50 Hertz OFW, Baltic Sea.

The RS2 tool was selected by NKT due to its unparalleled technical and performance capabilities resulting in increased productivity and a reduction on the projects total costs.

The RS2 spread of equipment was mobilised on the EDT Hercules and deployed using the ships crane. The repaired cable was to be lowered to NKT specification of 1.50m. Operations were carried out in water depths of 15m with soil conditions found to be predominantly sands with sections of firm clay sand. The RS2 excelled in both the de-burial and post lay trenching scopes averaging a progress rate of 4m/min in the soft sand areas and 2m/min in the firm clay sections and being lowered with 2 passes.