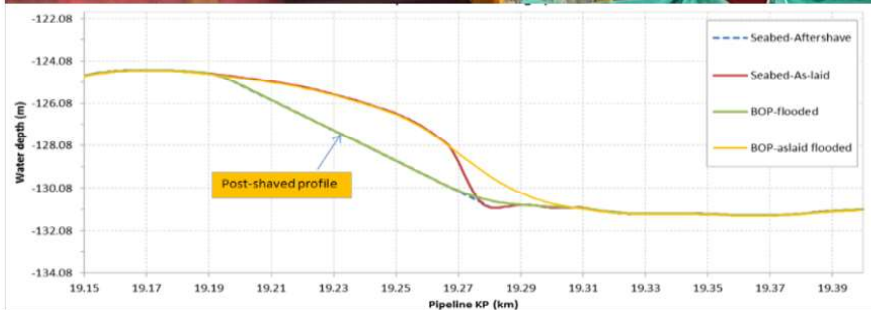
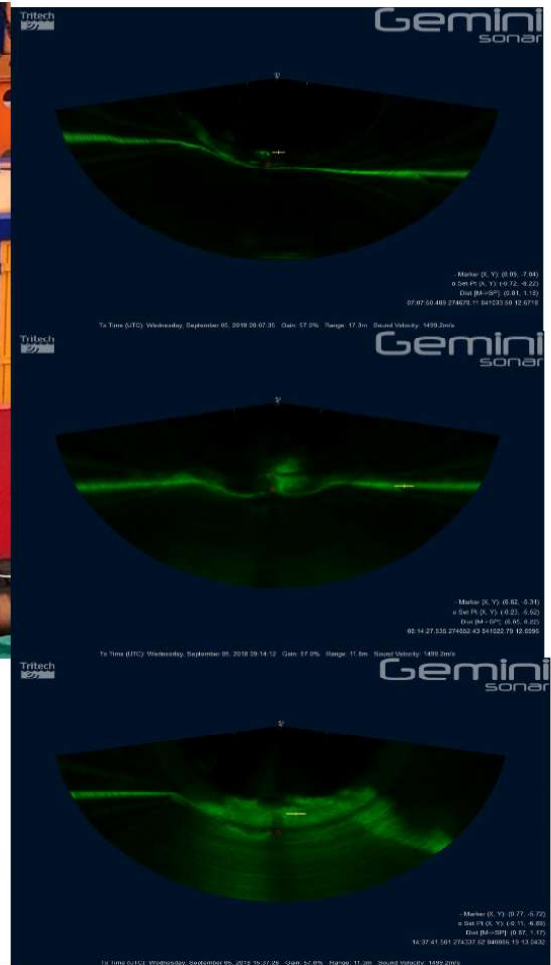


Sandwave Peak Shaving (TRS2)



Q4 2017 / TRS2 CFE SPREAD



Rotech Subsea were contracted to Subsea 7 to carry out Sandwave Peak Shaving Operations. Peak shaving was completed along the 16-inch flowline between well PLD-1P and Lat Tay Manifold approximately 20.73Km. The TRS2 tool was selected by Subsea 7 due to the increased controllability and capabilities over any other Subsea excavation tools on the market. Rotech Subsea also provided the onshore support required to mobilise the equipment and team quickly to ensure project deadlines were met.