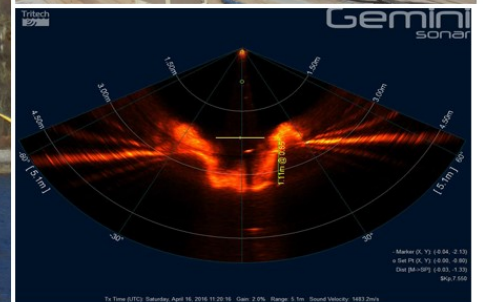


Cable Burial, Shore approach from Mainland to Jura Power cable

Q2 2016 / RS1 CFE SPREAD



Rotech Subsea Ltd were contracted by Briggs Marine to carry out burial operations on a power cable from Mainland Scotland to Jura.

The Rotech Subsea RS1 spread was mobilised onto the Olympic Delta vessel. This vessel was proven to be stable and able to work to a maximum of 3m Max wave height with no current limitation due to the vessels capability. Briggs initially requested Rotech to excavate two locations, Mainland Scotland and the coast of Jura. Both of these were shore side approaches, DeepOcean would Mattress the harder locations.

The RS1 was proven successful in burial operations achieving a minimum of 1m T.O.C as per client's request. Survey operations with the Gemini multi beam sonar was also proven successful when locating the cable 27m away from the as-built cable route.

After completing CFE on the Jura location Briggs had decided to use the spare mattresses on the mainland cable route to save cost.

Reference

Craig English, Operational Director : Briggs